



+ **SUPPLY CHAIN VISIBILITY**
EVERYTHING ELSE IS JUST TRACKING



MORE THAN JUST TRACKING

TRANSPARENCY ACROSS THE ENTIRE SUPPLY CHAIN.

Packaging, transporting, storing ...

... these are the main areas of application for our KTP transport containers. They are full of innovations and offer many advantages over conventional packaging systems. KTP containers protect the goods to be transported, are durable, safe, foldable, ergonomic to handle and 100% recyclable. This is how we make logistics smart!

With the help of our cooperation partner BOX ID, our containers become even smarter when needed – they are made visible online throughout the entire supply chain.

Individual containers and their contents can quickly exceed the value of a small car (e.g. when transporting complex LED headlights for cars). The loss of goods in transit can cause enormous damage. It's not just the goods that need to be replaced – with just-in-time production, precise delivery times are crucial. Everything is precisely timed. If there is a disruption in the supply chain, e.g. due to the absence of important parts, production comes to a standstill.

BOX ID enables full control and a complete overview of the movement of the containers.

The core of the BOX ID product range is the BOX ID Data Intelligence Platform. As a cloud service, it is highly available and makes it possible to manage any number of load carriers and different data sources.

BOX ID protects against the loss of valuable load carriers.

Loss of load carriers is a common phenomenon. BOX ID has been proven to prevent the loss of load carriers by up to 95%. The load carriers are equipped with a transmitter that regularly sends the current position of the object to the Data Intelligence Platform. Depending on the application, these transmitters can remain autonomous in the field for 5–7 years.

BOX ID's vision is to seamlessly connect real material flows and processes digitally with the IT world. In this way, customers worldwide are offered complete solutions for effective supply chain management with true end-to-end transparency.



BOX ID – ADVANTAGES AT A GLANCE

- Reduction of shrinkage
- No manual search times
- Protection against theft and unauthorized use
- Automatic monitoring of permitted areas of use and process sequences

BOX ID Systems GmbH, founded in Munich in 2018, now has over 100 customers worldwide. It uses advanced technology that creates transparency in the supply chain, monitors performance and helps customers to design their logistics processes more effectively.

Unique algorithms are available for the fused data from different data sources to automate and optimise the logistics flow. From tracking and managing assets to major innovation in shipment monitoring, BOX ID offers measurable added value in the relevant areas.



BOX ID DoubleTrack

The DoubleTrack is optimised for minimum costs and maximum service life. With WiFi positioning, it can be used excellently in material logistics and in the PostParcel environment.

Service life: up to 7 years /3 messages per day

Locating: WiFi (approx. 50 m) | radio network (1–10 km)

Available radio zones: worldwide

Installed base: 500.000 units

Suitable for all types of transport containers.

BOX ID Double Track
Fig. in original size
140 x 50 x 25 mm



DATA INTELLIGENCE PLATFORM

A CLOUD SERVICE THAT MAKES IT POSSIBLE.

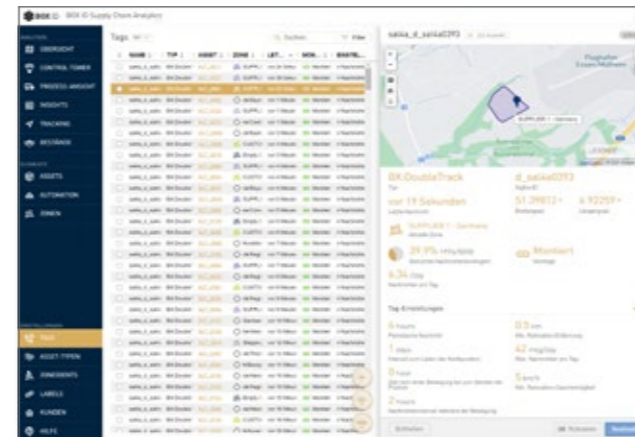
The BOX ID Data Intelligence Platform is a cloud service and highly available. It makes it possible to manage and automatically evaluate any number of mobile tracking devices, but also all other sources of location data (e.g. from BLE or RFID).



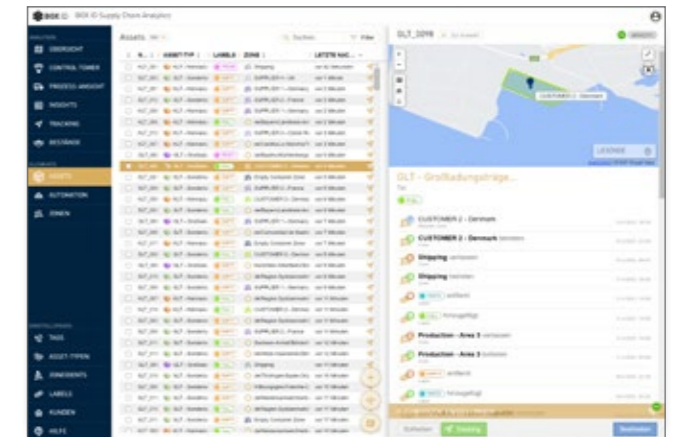
The BOX ID base module enables comprehensive modelling of tracked assets and their circulation. Containers and other mobile assets can be recorded with all their central data and grouped and filtered as desired. Users and tracking devices can also be managed. Hierarchical location structures can be created (e.g. Location > Building > Hall > Zone) and geofencing can be used to generate signals and trigger actions.

BOX ID ANALYTICS.

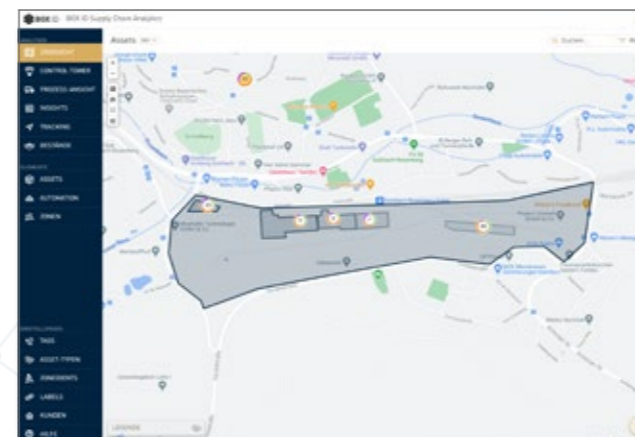
The system offers comprehensive tools to analyse and monitor logistical flows. For this purpose, numerous reporting functions are available to efficiently track the distribution of assets, their circulation times and flows. With these tools, critical process parameters can be monitored automatically.



DEVICE MANAGEMENT
Any number of mobile devices (tags) can be managed in Device Management.



ASSET MANAGEMENT
Assets can be classified as desired (e.g. container types, circuits) and stored with all relevant data.



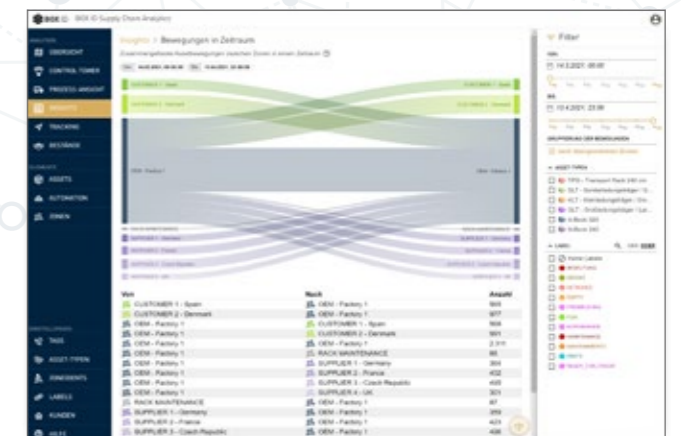
ZONES OUTDOOR AND INDOOR
Any, even hierarchical zones can be created and monitored.



LOW CODE AUTOMATION
Extensive functions for automated processing can be configured – without programming..



CIRCULATION TIME ANALYSES
Corridors can be defined on the basis of the circulation time distribution, which characterise normal operation.



FLOW ANALYSES
Graphic flow analyses visualise the movements between individual locations.



MANY PARTICIPANTS – ONE SOLUTION

BOX ID STOCK KEEPING.

BOX ID Stock Keeping is specifically designed for asset fleets that are used across many participants.

The software makes it possible to automatically track usage by all participants and make it available for billing. For this purpose, all participants in the supply chain can be modelled with logical inventory accounts and the flows can also be divided into full and empty goods. Bookings from the ERP can

be taken into account just as much as the asset movements generated from the sensor data.

Permanent inventory monitoring ensures that bottlenecks can be detected much earlier, before there is a threat of the container supply being cut off.

ALL BOX ID ADVANTAGES AT A GLANCE.

TRANSPARENCY throughout the supply chain

- Containers and processes become visible
- Monitoring and control of critical processes and KPIs

REDUCTION of shrinkage

- Reduced replacement costs
- Minimisation of supply losses

INCREASE in availability

- Optimised turnaround times
- Faster return of empties
- Reduced container requirements

AVOID process disruptions

- Avoid bottlenecks
- Detect misuse and theft
- Monitoring critical process parameters and trends
- Identify potential process failures at an early stage

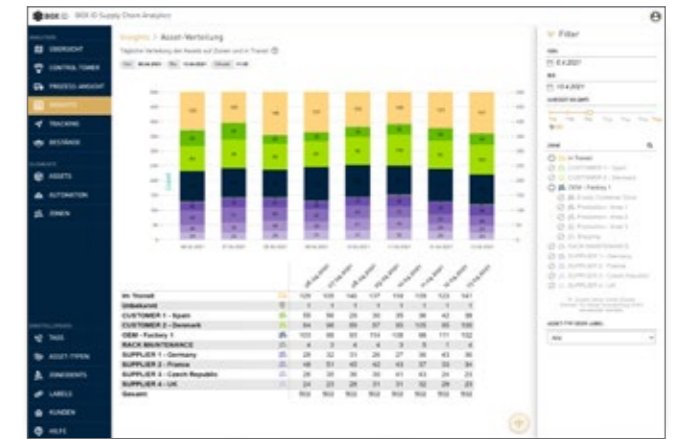
REDUCE handling costs

- Reduce manual administration
- Minimise search times
- Process automation
- Automatic reporting



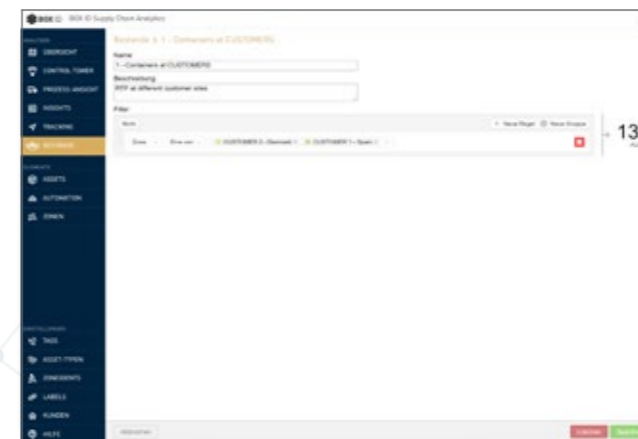
ACTIVITY ANALYSIS ACROSS ALL ZONES

Asset inflows and outflows can be monitored separately for each zone.



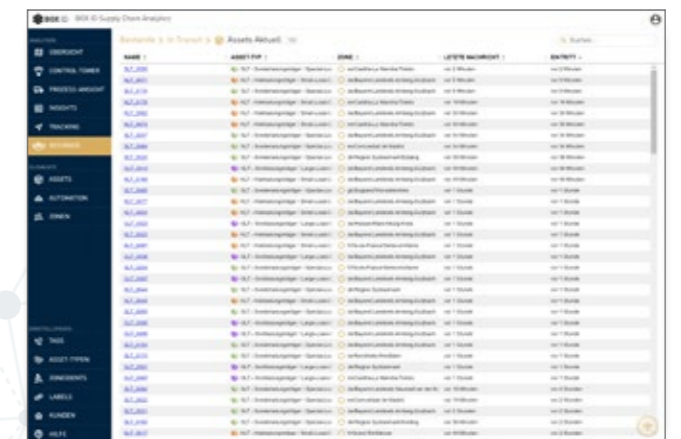
INVENTORY ACROSS ALL LOCATIONS

The distribution of assets is permanently recorded across all locations and can be analysed along the time.



ASSET ACCOUNTS

Logical accounts can be used to define and monitor any inventory.



INVENTORY MONITORING

Keep an eye on your inventory at all times – across all locations, 24 hours a day, seven days a week.



SAP INTERFACE

Our partner MHP offers an interface to SAP EWM.

SAVE TIME AND MONEY

KTP + BOX ID MAKE YOUR LOGISTICS MORE EFFICIENT.



REDUCTION OF SHRINKAGE

With BOX ID, you can reduce the loss of containers to practically zero, on average by approx.

95%



REDUCE CIRCULATION TIMES

With BOX ID you reduce the circulation times of shuttle packaging enormously, on average by approx.

20%



LESS TIED-UP CAPITAL

With BOX ID, you need significantly fewer mobile assets with the same availability, on average by about

15%



KTP Kunststoff Palettentechnik GmbH

Saarstraße 1, 66359 Bous

T +49 6834 9210 - 0

F +49 6834 9210 - 20

info@ktp-online.de

www.ktp-online.de



BOX ID Systems GmbH

Lichtenbergstr. 8, c/o gate

85748 Garching

T +49 89 2190973 - 60

info@box-id.com

www.box-id.com

Publisher: KTP Kunststoffpalettentechnik GmbH | All rights reserved. The contents of this document are for informational purposes only; subject to amendments. KTP gives no guarantee of the correctness of the information given herein. Duplication, use or distribution is not permitted without our written consent.

Photos: BOX ID, KTP, iStock Photo. | **Date:** August 2022



+ SUPPLY CHAIN VISIBILITY

QUESTIONS AND ANSWERS.



REDUCTION OF SHRINKAGE

With BOX ID, you can reduce the loss of containers to practically zero, on average by approx.

95%



REDUCE CIRCULATION TIMES

With BOX ID you reduce the circulation times of shuttle packaging enormously, on average by approx.

20%



LESS TIED-UP CAPITAL

With BOX ID, you need significantly fewer mobile assets with the same availability, on average by about

15%



+ FAQ

FREQUENT QUESTIONS ABOUT THE CLOUD-SERVICE.



Special agreements around the cloud service are possible. In most cases, however, they are not even necessary, since the standard cloud service already covers many things. Typical questions at this point include:

+ Can I run the cloud service under my branding?

▶ Gladly - this is a feature that is already included in the base module.

+ Can the service be connected via Rest API?

▶ Sure – this is also a feature that is already included in the base module.

+ Is it possible to use my own frontend?

▶ With Rest API this is not a problem. You can even embed any views into your own frontend.

+ I need a service level agreement (SLA) – is that feasible?

▶ We are running the service since January 2018 with 365 d/24 h and > 99 % availability.

+ Are special customizations possible if necessary?

▶ In most cases, this can be solved via the Rest API. If not, we are happy to create a Statement of Work (SOW) with you and, based on this, a cost estimate for your adaptation.